

Innovation In Material Recovery

Presentation prepared exclusively for

MWMA | Sept 17, 2025

Wasteful: Value lost through the linear economy

Each year, use of landfills in the US results in:

165M

TONS MSW SENT TO LANDFILL, 2025¹

\$6.5B

VALUABLE MATERIALS LOST TO LANDFILL²

101M

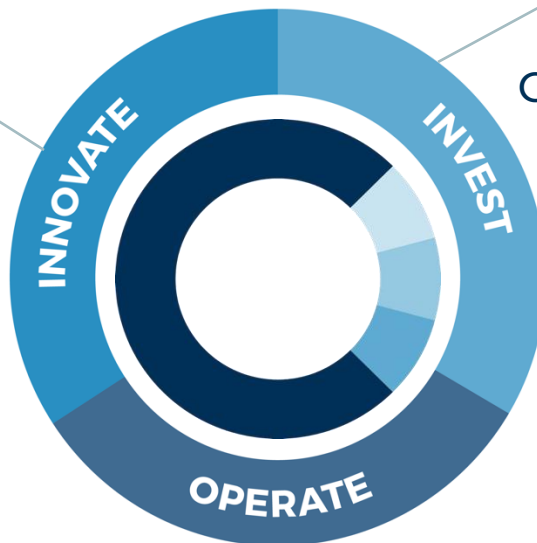
TONS OF CO2E EMISSIONS³

The Closed Loop Partners Platform



Center for the Circular Economy

Innovation center serving the world's largest consumer goods, retail, and material science companies



Closed Loop Capital Management

Capital management firm with buyout, venture and catalytic private credit strategies



Closed Loop Builders

Builder & operator of circular economy services and infrastructure



25.2M

METRIC TONS OF GREENHOUSE
GAS EMISSIONS AVOIDED



90+

INVESTMENTS

\$575M+

assets under
management

**GLOBAL
REACH** with
an operational
focus in the
U.S.

PORTFOLIO
COMPANIES ACROSS
5 CONTINENTS
10 COUNTRIES
29 U.S. STATES

50+

global
corporations
actively engaged
across the firm

25+

circular
economy
facilities
owned or
operated

75+

cities engaged in
our ecosystem

4+

in-market circular
programs
activated across
the U.S.

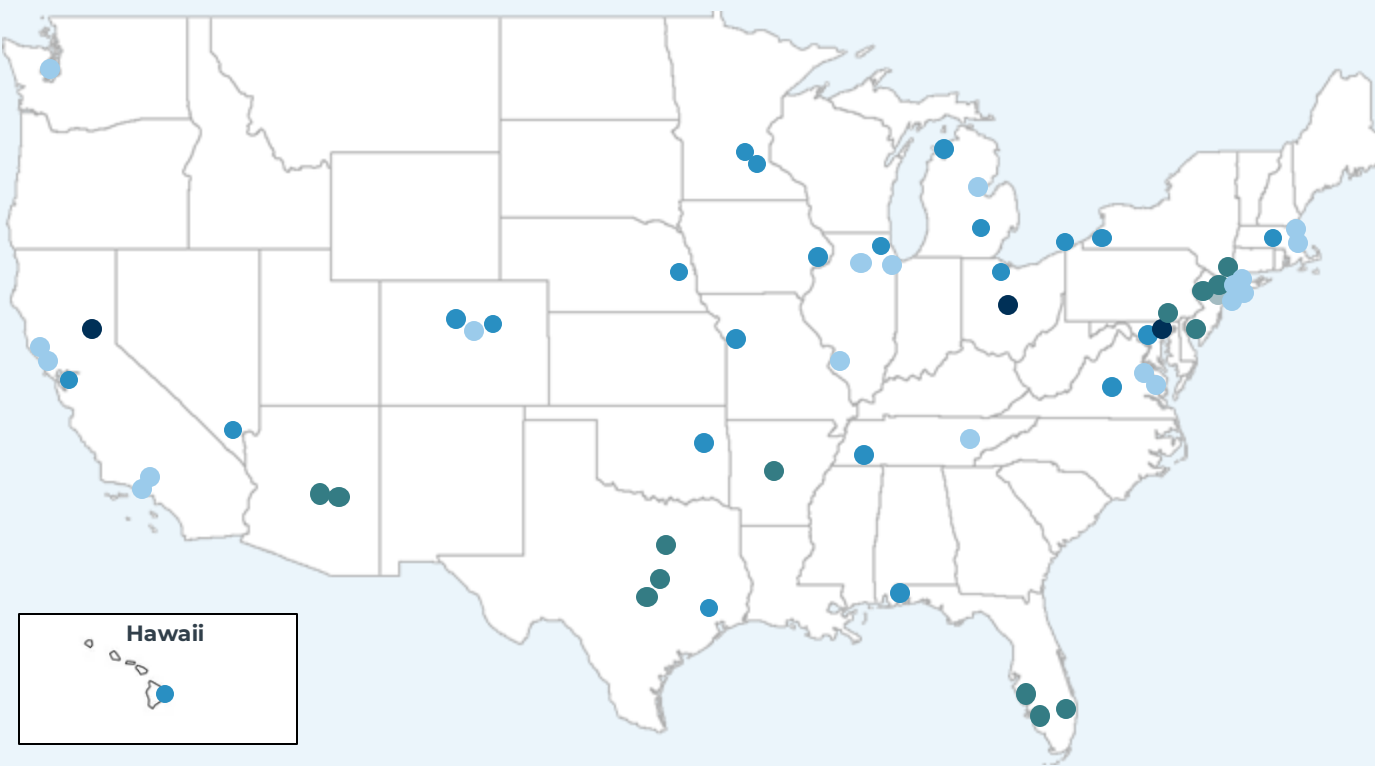
Our firmwide
investments
primarily
contribute to
SDG Goal 12.



Our work across our investments
strategies also benefits the
following SDGs:



90+ Investments to Date



- Venture Capital
- Buyout Private Equity
- Catalytic Capital
- Circular Services

OTHER INTERNATIONAL

Canada

- Venture Capital: 1 company
- Catalytic Capital: 1 company

Europe

- Venture Capital: 5 companies
- Catalytic Capital: 1 company

Israel

- Venture Capital: 3 companies

South America

- Venture Capital: 2 companies

TRENDS: Innovation in Materials Management

New Packaging Formats

Moving from flexibles and other plastics to paper

Biobased packaging

Reusable packaging

QR Codes/digital passports and other markings for identification

Recycling Technologies

AI for identification and tracking across system

Distributed collection

New depack tech separating food waste from packaging

Solutions for emerging material streams like solar panels

Increased Valorization

Turning food waste into high value chemicals

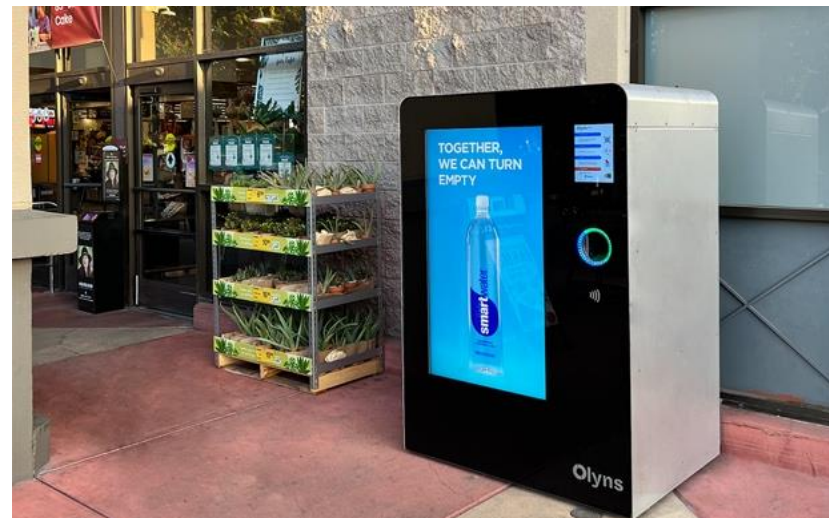
High purity metal separation

Continued (slow) growth of molecular/chemical recycling technologies

TEMPERPACK



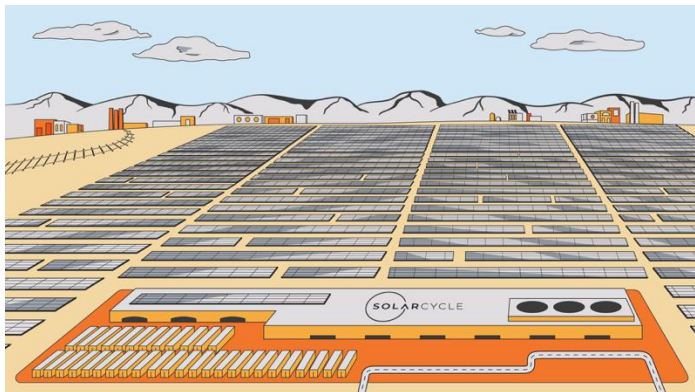
OLYNS



GREYPARROT

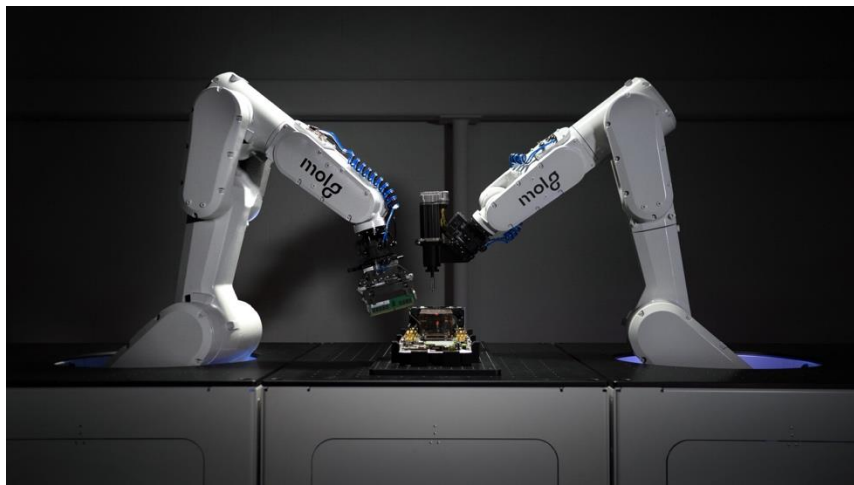


SOLARCYCLE



GREENMANTRA





Center for the Circular Economy: HIGHLIGHT

Petaluma



An aerial photograph of a dense green forest. A light-colored, circular path or clearing is visible in the center of the image, surrounded by thick foliage. The text "Thank You" is overlaid in white on the path.

Thank You

partnerships@closedlooppartners.com

IMPORTANT NOTICE

Disclosures

This Presentation is provided to persons domiciled or having a registered office in Japan to provide information on Closed Loop Partners business, including its business as a manager of private funds and investments, and does not constitute pre-marketing or marketing of any fund or investment strategy. Information about prior investments and investment strategies of Closed Loop Partners' professionals is provided solely to illustrate such persons' investment experience, and processes and strategies. It does not represent any track record of, or any vehicles managed by, Closed Loop Partners. Such information is not intended to be indicative of any fund or vehicle's future results.