



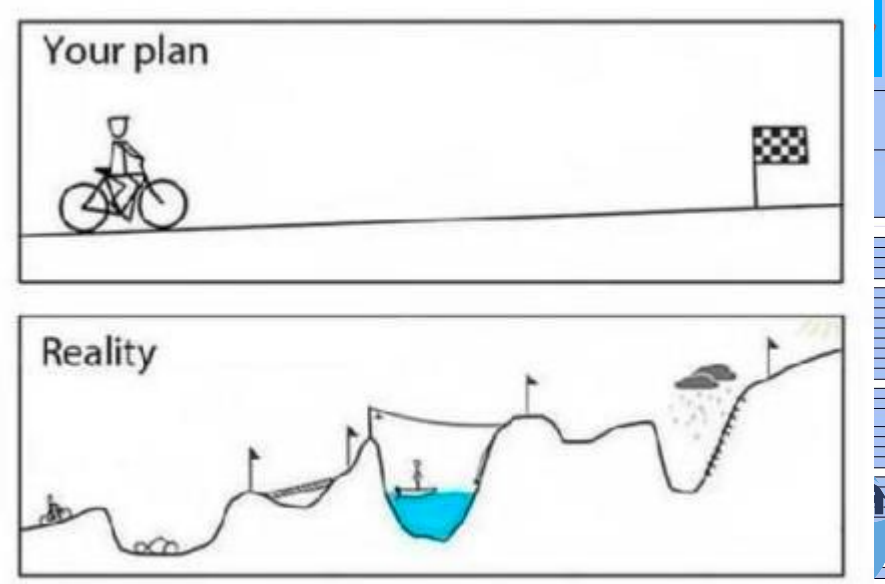
Local Governments Addressing Water Quality Through Collaboration

Using the power of a diverse network



PERCEPTION



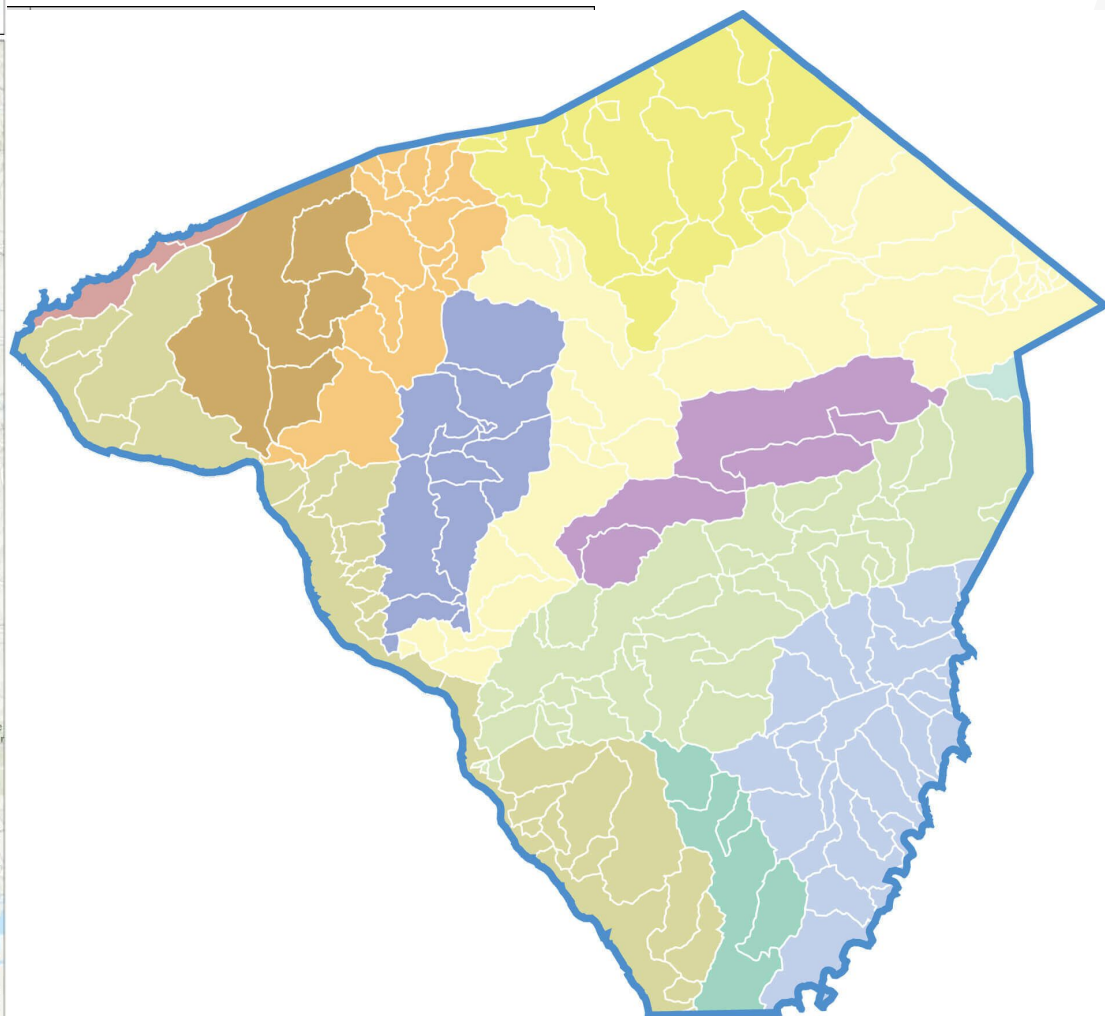
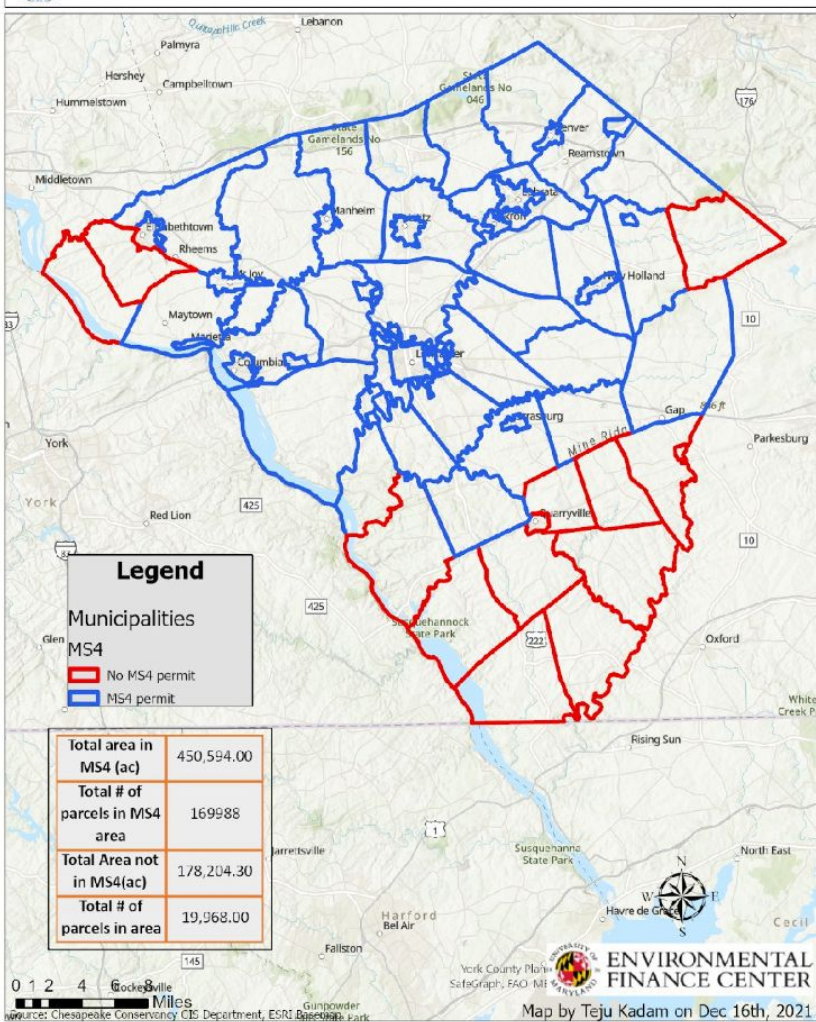




The entire community
is working towards the **same goal** at the **same time**
- to improve our local water quality



Lancaster County, PA: MS4 permit vs. Non-MS4



Water Quality in Lancaster

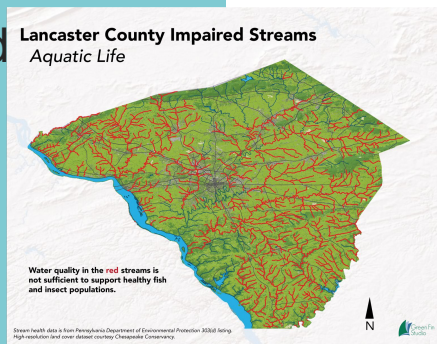
Problem

More than half of Lancaster County's 1,400 miles of streams are impaired.

Lancaster County streams have the highest amount of nitrogen, phosphorus, and sediment in monitored areas of the Chesapeake Bay Watershed

Solution

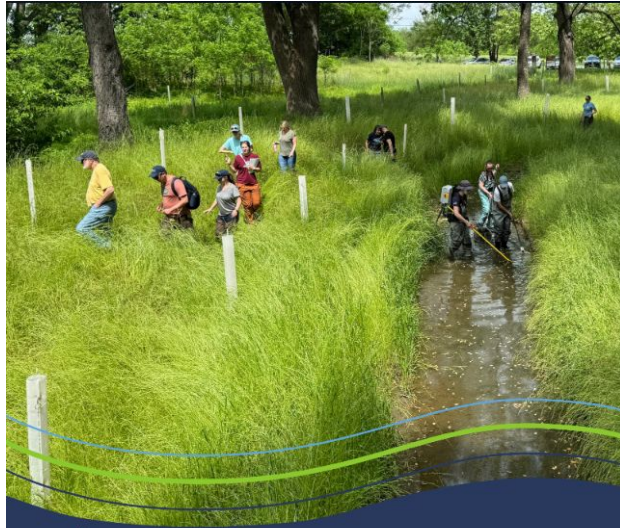
Build and sustain a local multi-sector collaboration, supported by a strong backbone organization, to advance a community-led Common Agenda toward a shared result.



A shared vision of Clean and Clear Water in Lancaster County by 2040.



CAP Opportunity with New Numbers



Lancaster
CLEAN WATER PARTNERS

Lancaster Countywide Action Plan
A Strategy for Restoring Lancaster's Waterways

2024 Update

"Lancaster County has demonstrated tremendous success through collaboration and strategic, data-driven investments to clean up their local waters."

- Jill Whitcomb, PA Department of Environmental Protection

Photo courtesy of Lancaster Farmland Trust.

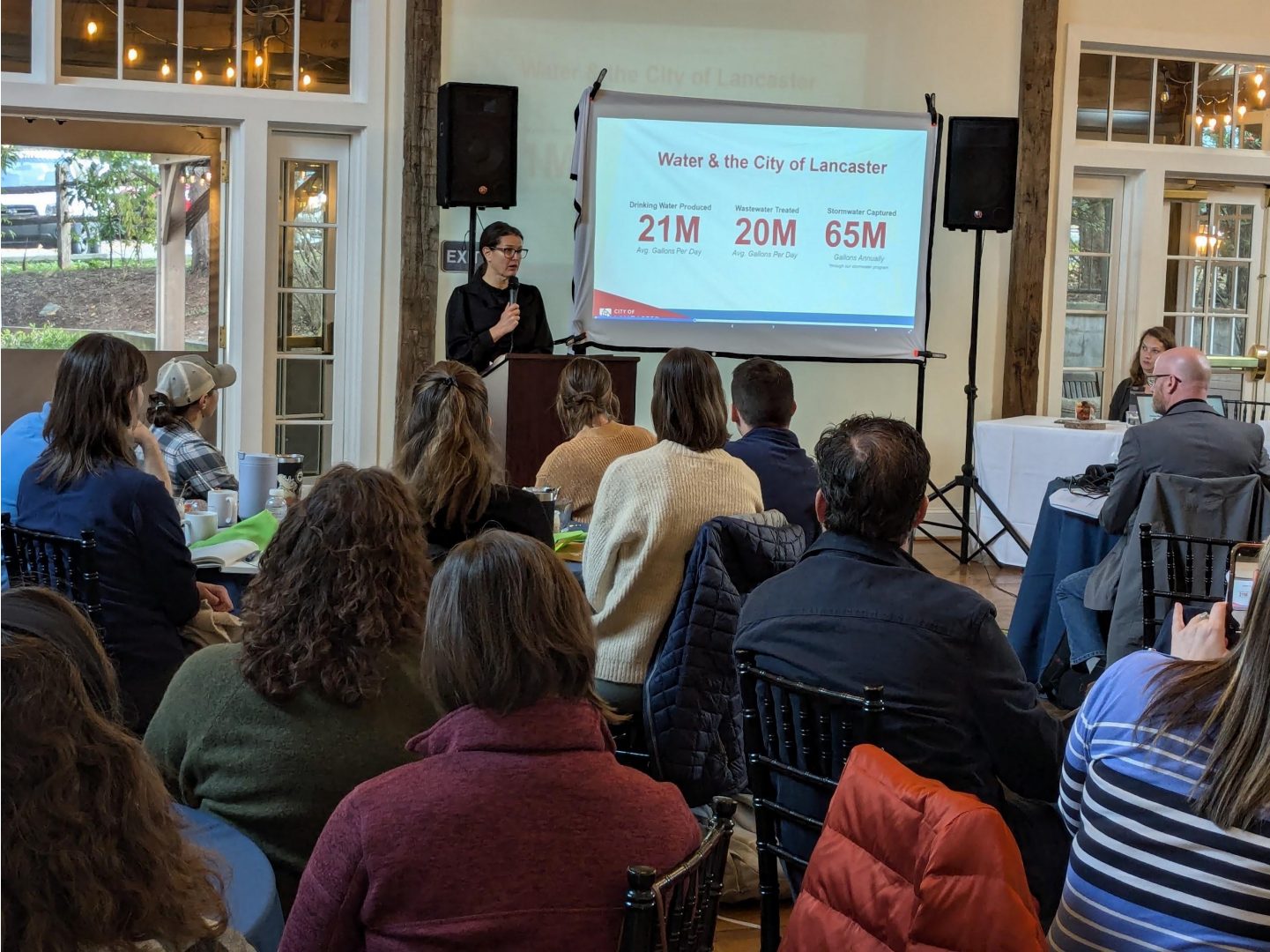


What We Do to Make Collaboration Real

We have to zoom out, think beyond the permit requirements for clean water results.

So we connect partners to other tools and partners

- Low Volume Roads
- Nonprofits that have \$ or capacity to do specific projects
- Mapping
- Water authority administrator conversations about PFAS
- Source water protection plans
- MS4 permits and public comment periods
- Host professional learning opportunities
- Attend the association meetings armed with success stories, not an ask



Water & the City of Lancaster

Drinking Water Produced

21M

Avg. Gallons Per Day

Wastewater Treated

20M

Avg. Gallons Per Day

Stormwater Captured

65M

Gallons Annually

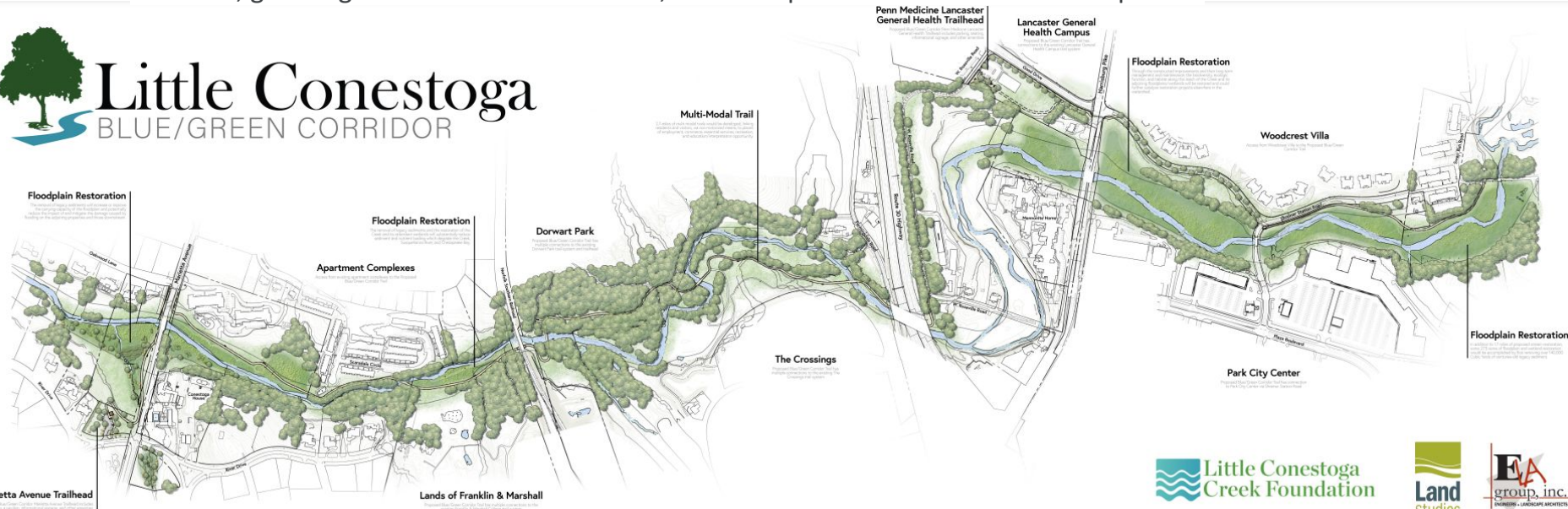
Through our stormwater program

CITY OF LANCASTER

Example Project - Watershed Permit Concept

Little Conestoga Creek Blue/Green Corridor, Lancaster, PA. 1.2 million pound sediment reduction with associated N & P

- Stream restoration and floodplain restoration initially presented as *7 individual projects, 7 permits*
- 40 landowners, 3.5 miles, 4 municipalities partnered with PADEP, USACE
- **End Result: One permit with 7 phases** allowed streamlined engineering work, more understandable landowner outreach, green light for construction overall, and a simpler MOU with the 4 municipalities



Voices and Perspectives



Physical Habitat Evaluation Form for Riffle/Run Prevalence

Waterbody Name: _____

Location: _____ [GIS Key (YYYYMMDD North-Use)]

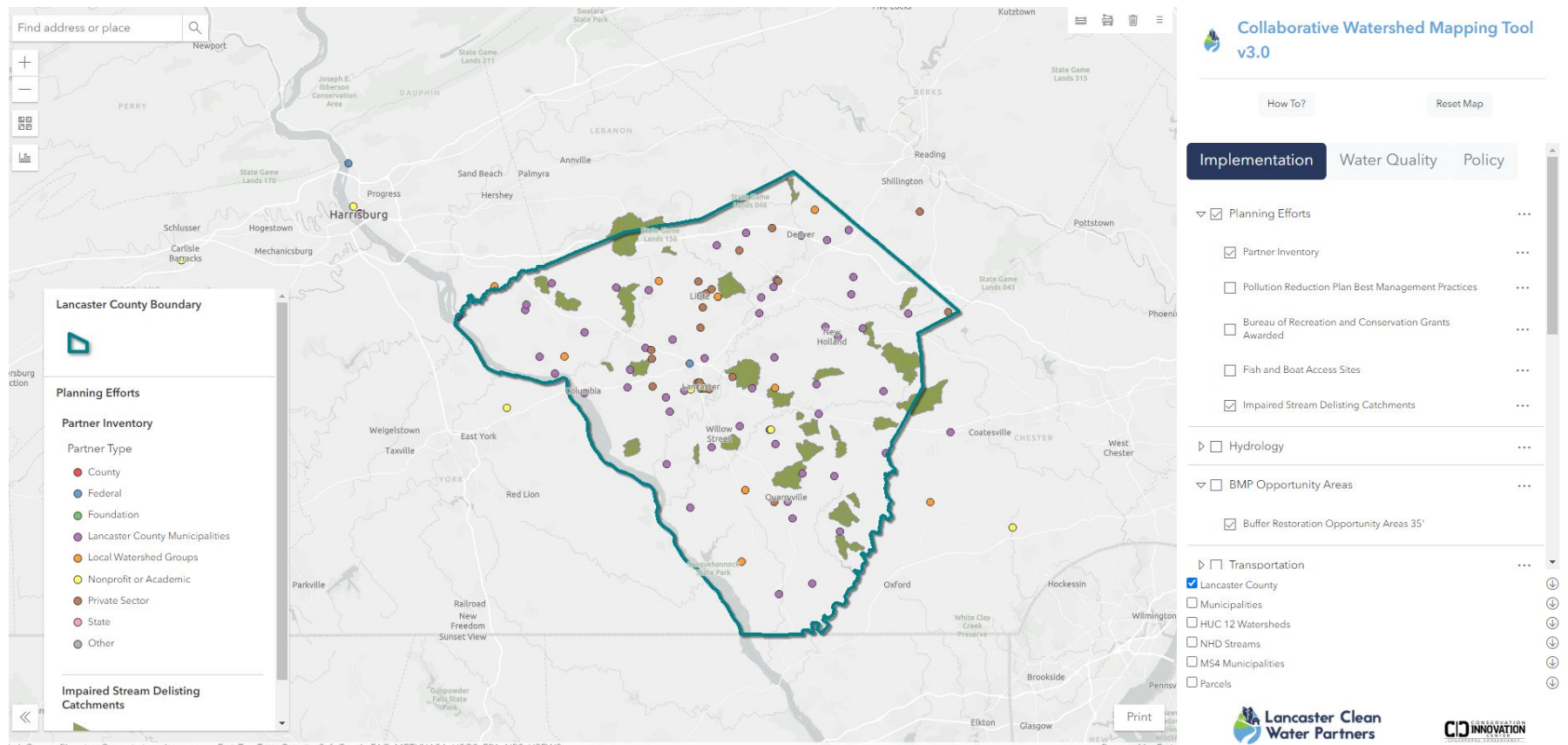
Investigator(s): _____

Completed By: _____

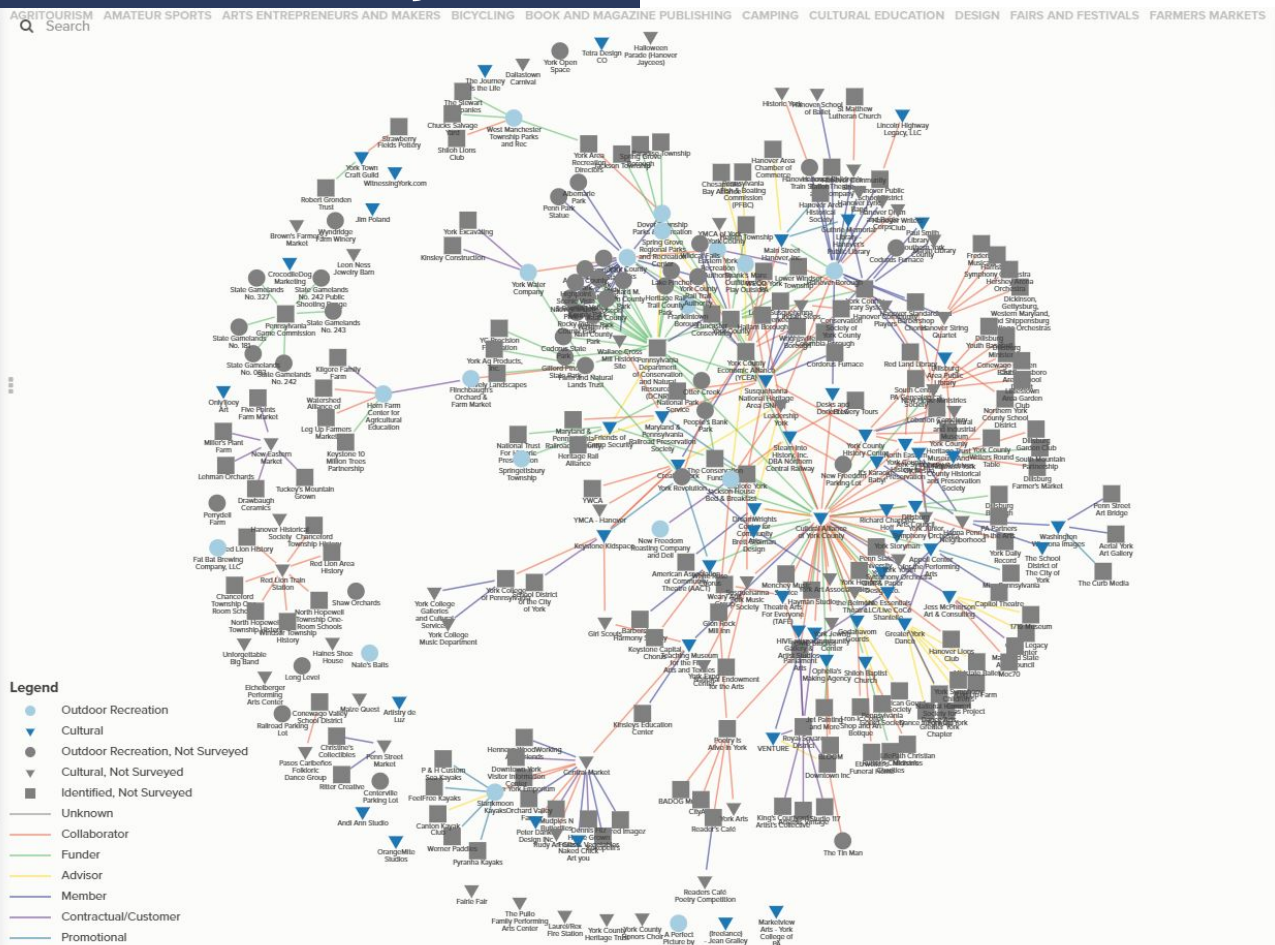
Parameter	Optimal	Suboptimal	Marginal	Poor
1. Instream Cover (Fish)	Greater than 50% mix of boulder, cobble, submerged logs, undercut banks, or other stable habitat.	30-50% mix of boulder, cobble, or other stable habitat; adequate habitat.	10-30% mix of boulder, cobble, or other stable habitat; habitat availability less than desirable.	Less than 10% mix boulder, cobble, or stable habitat; lack of habitat is obvious.
2. Epifaunal Substrate	Well-developed riffle and run; riffle is as wide as stream and length extends two times the width.	Riffle is as wide as stream but length is less than two times width; abundance of cobble.	Run area may be lacking; riffle not as wide as stream and its length.	Riffles or run virtually nonexistent; large boulders and debris.



Collaborative Watershed Mapping Tool



Coming Soon and Definitely Needed



Data Collection in Story Form

Act 167 and your MS4 permit are tools you have to help achieve the shared goals

They are the trusted local peers

And the storytellers!

Join them for coffee or a tour in the field to chat

Ben Webber



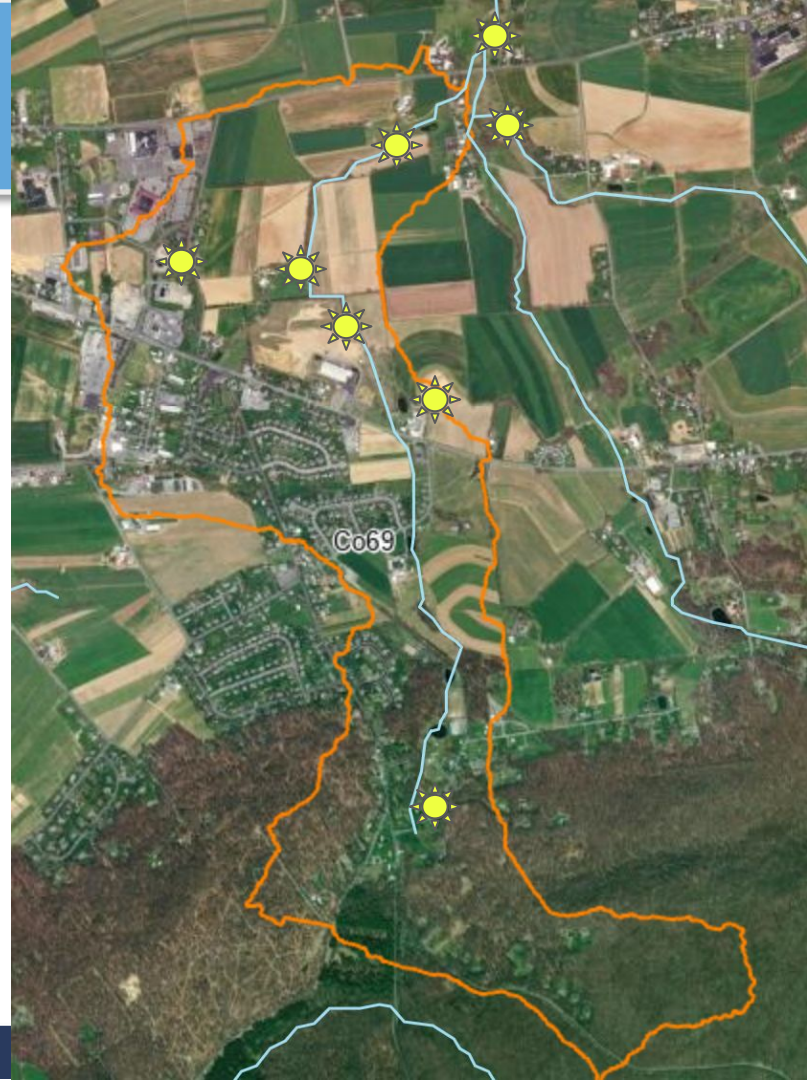
Ben, a civil engineer with nearly four decades of experience, grew up in Manheim Township, where he developed a deep connection to local streams and nature. In recent

Terry Martin



Terry, a lifelong resident of Eastern Lancaster County, has dedicated his career to the Conestoga River Basin through roles in agri-business, construction, and local government.

CEDAR CREEK



CLEAN WATER
CONVERSATIONS



2024

Clean Water Conversations

1.6K

Downloads

18

Episodes

22

Countries

681

Minutes

Top 50%

All Shows

Buzzsprout

CONVERSATIONS



Lancaster
CLEAN WATER PARTNERS

Subscribe
to our
podcast!





The entire community
is working on the **same goal** at the **same time**
- to improve our local water quality



The Power of Storytelling for You As A Leader

Next time you're at a party or a meeting and someone says "what's new in your world?" answer with this:

"Well you know I help lead our community and clean water is part of that, right? Just recently I was at a meeting in Lancaster, PA and heard this great story. You mind if I share it?"

