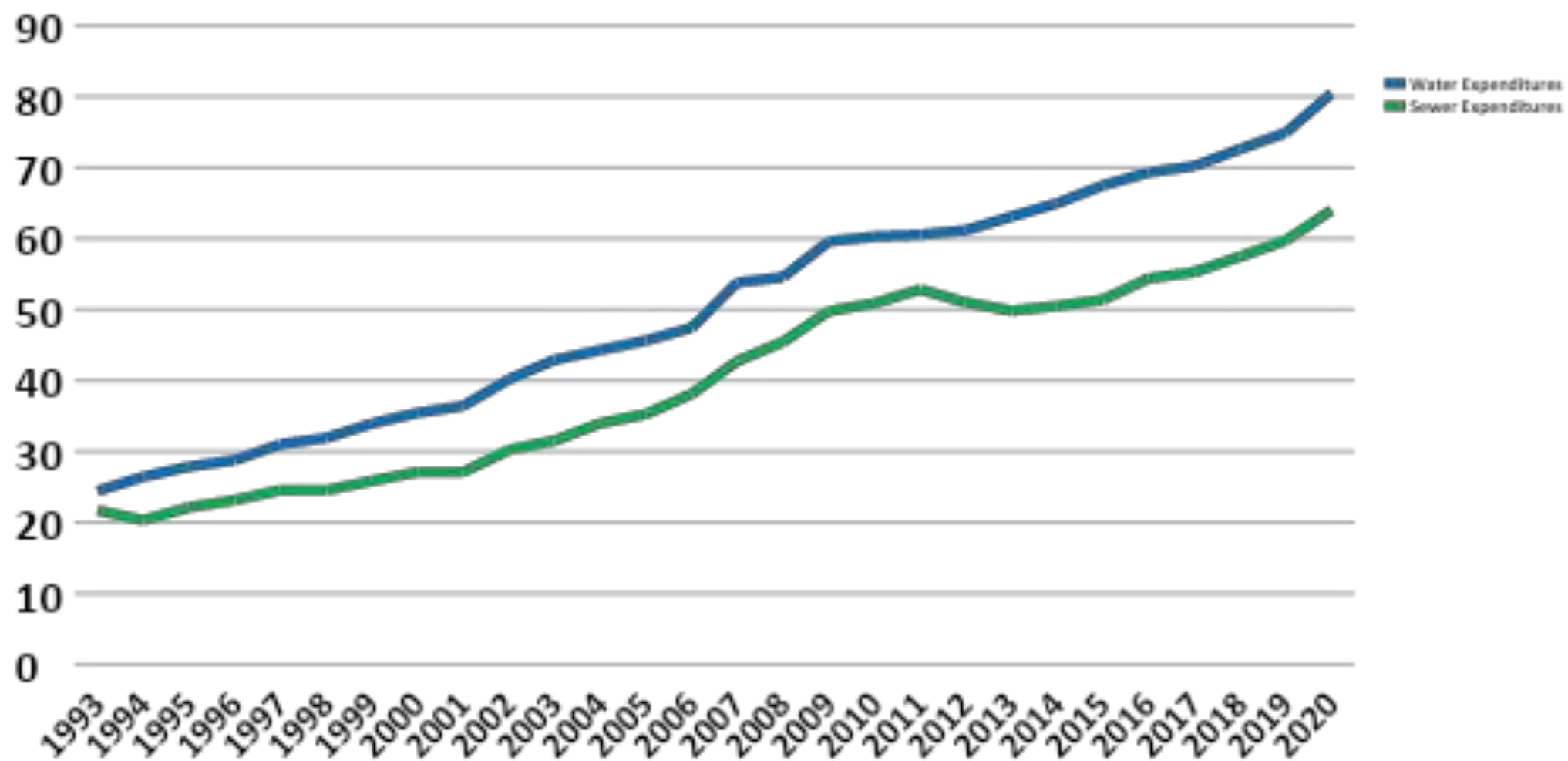


Local Spending on Municipal Water and Sewer, 1993-2020



Ratio of Expenditures/Revenues, 1993-2020

-Water

-Sewer

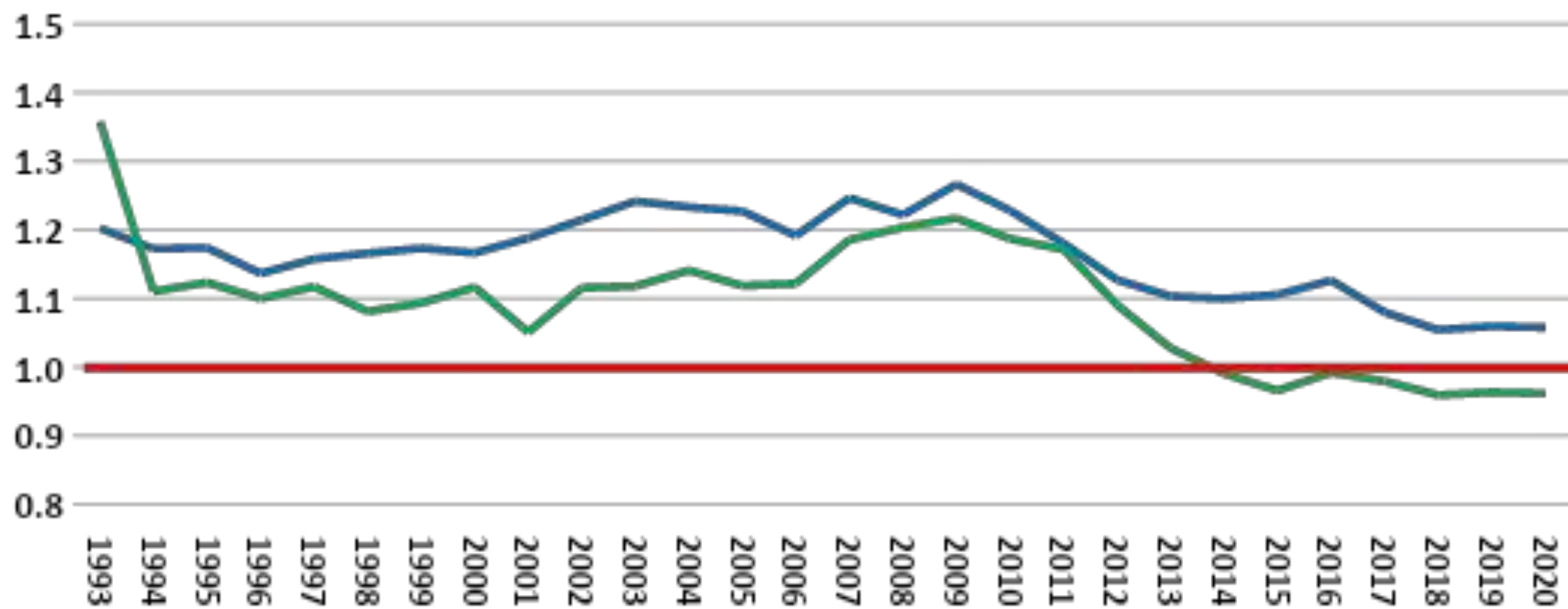


Table 1:
Annual Construction Spending for Sewer and Water Infrastructure

			2019-2020	2019-2020
Type of Construction:	2019	2020	Change	Change
Total	(\$ Millions)	(\$ Millions)	%	(\$ Millions)
State and Local Construction	318,069	340,241	7.0	22,172
Sewage/dry waste	13,331	12,537	-6.0	-794
Plant	2,629	1,908	-27.4	-721
Line/pump station	10,551	10,475	-0.7	-76
Waste water	11,713	13,901	18.7	2,188
Plant	8,461	9,780	15.6	1,319
Line/drain	3,252	4,120	26.7	868
Water Supply	15,613	18,010	15.4	2,397
Plant	5,206	5,665	8.8	459
Well	752	715	-4.9	-37
Line	7,189	8,096	12.6	907
Pump station	1,071	1,688	57.6	617
Reservoir	720	879	22.1	159
Tank-Tower	676	968	43.2	292

California	\$
DWSRF General	158,733,000
DWSRF Lead Service Line Replacement	250,107,000
DWSRF Emerging Contaminants	66,649,000
CWSRF General	127,290,000
CWSRF Emerging Contaminants	6,687,000

EPA March 8, 2022 Memorandum

Attachment 1 – Appendix E: Additional Information to Assist States with Developing a Disadvantaged Community Definition and Affordability Criteria

The CWA section 603(i)(2) requires states to develop affordability criteria that will assist them in identifying applicants that would have difficulty financing projects without additional subsidization.

The CWA section 603(i)(2)(A) requires that criteria be based on:

- income;**
- unemployment data;**
- population trends; and**
- other data determined relevant by the state.**