


What Cities are doing now to realize a more resilient, de-carbonized, and equitable future

U.S. Conference of Mayors

Stephen Engblom, AIA, LEED AP
Executive Vice President, Global Cities Director

stephen.engblom@aecom.com

 [@stephengblom](https://twitter.com/stephengblom)

April 14, 2021

Cities are at the forefront of translating **policy** >> **action**

1

**Making the
Business Case for
Resilience**

Miami

2

**Advancing
Electrification &
Preparing the
Future Workforce**

Chicago

3

**Accelerating
Clean Energy
Innovation**

Los Angeles

4

**Delivering on
Decarbonization
Promises**

Manchester, UK

5

**Promoting
Integrated Land
Planning and
Infrastructure**

New York

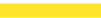
San Francisco

Business Case for Resilience **Miami**

Climate Action Planning with a focus on:

- Preparing the workforce
- Creating jobs
- Building economic opportunity
- Building consensus with the private sector





Fostering Equitable Access
to Green Jobs and Careers

Miami



	BENEFITS (avoided losses)	COSTS (of adaptation)	BENEFIT- COST RATIO	NET NEW JOB YEARS
COMMUNITY- WIDE ADAPTATION	\$37.9 billion	\$18.2 billion	2.08	85,000
BUILDING- LEVEL ADAPTATION	\$17.6 billion	\$4.4 billion	3.97	56,000

Note: Results presented in net present value terms using a 5 percent discount rate over the period of the analysis from 2020 to 2070. Estimated job years supported by direct investment in adaptation strategies in the four counties. Individual results at the county level vary.

Advancing Electrification & Preparing the Future Workforce **Chicago**

- Transportation electrification and decarbonization create tremendous opportunities for the economy, environment, and public health
- Success depends upon a highly trained and diverse STEM workforce
- USDOE Grant
AECOM, City Colleges of Chicago, University of Chicago (Facilities) and Chicago Schools Decarbonization / Next Gen Curriculum and Career Development Program



Accelerating Clean Energy Innovation

Los Angeles

- In 2019, LA committed to 100% renewable energy through its Green New Deal
- In 2021, the City is turning policy planning into action through its LA100 study



The Los Angeles 100% Renewable Energy Study



Accelerating Clean Energy
Innovation


Los Angeles

- Density supports infrastructure investments and achieves environmental, equity and carbon targets

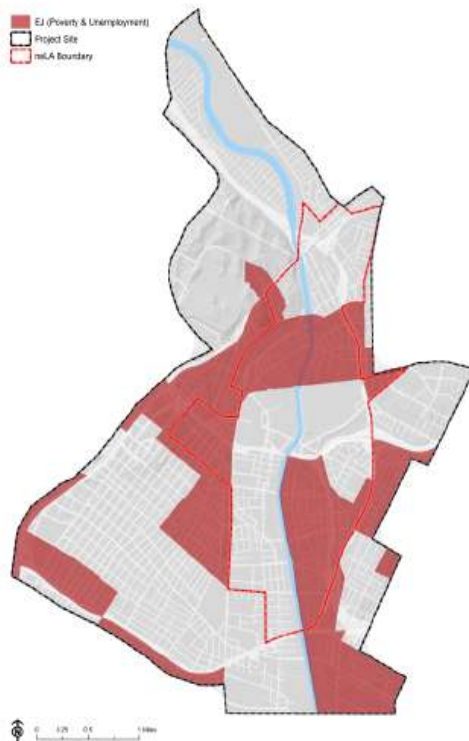


Accelerating Clean Energy Innovation Los Angeles

- LA River Gateway
- 4 Miles of Iconic Riverfront
- USACE and City Plans

 EJ Areas with poverty and unemployment

 EJ (Poverty & Unemployment)
 Project Site
 mlA Boundary



Existing. EJ

 **57K**

Total Population

Proposed. EJ

 **97K**

 **36** ac

Total Acres Park

 **151** ac

 **47%**

Accessibility to
Park & Open Space
within 5 min walk

 **99%**

 **65%**

Jobs Close to Transit
within 10 min walk

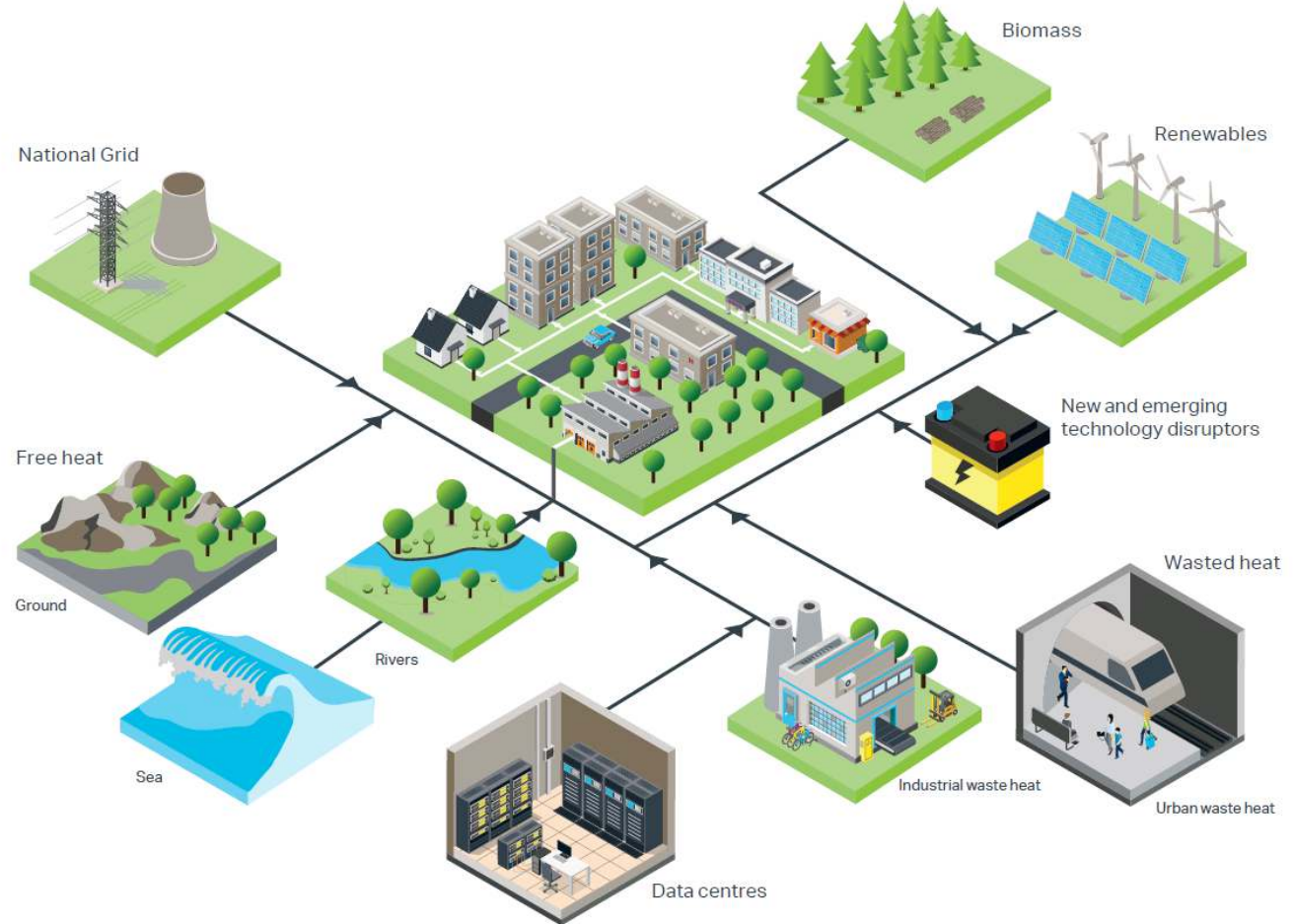
 **72%**

Census Tracts with unemployment rate 200% of city's average (7.5%) or population under poverty line over 75% are identified as 'EJ areas with poverty and unemployment'.

Source : CalEnviroScreen 2.0

Delivering on Decarbonization Promises Manchester

- National government set ambitious climate standard and policies to be net zero by 2050
- Manchester as pilot city to hit net zero energy by 2038
- Public portfolio of facilities as a market maker



City Decarbonization Delivery Plan

Greater Manchester Combined Authority

- Identification of heat decarbonization opportunities
 - Housing
 - Schools
 - Local Authority estate
 - NHS
 - University campuses
- £3bn investment in G.M. to 2038 (\$4bn) if using Miami 4x that would be £12bn of economic benefit
 - Households will save between £49m and £141m every year through improving the energy efficiency of their homes.
 - 30,000 new jobs will be created in Manchester's growing environment and sustainability sector
 - £ 500m per year on NHS Energy Savings

City Characteristics/ Key data



Population

2.8m



Area

127,700Ha



No. of Domestic Properties

1.2m



Total Heat Demand

30TWh



Total Heat CO₂ Emissions

4.2m_{tCO₂}

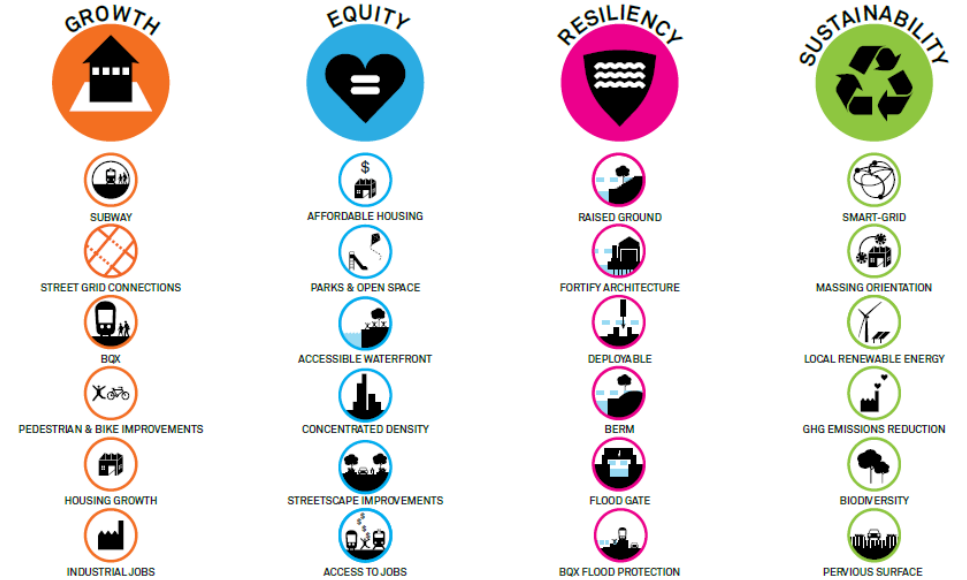
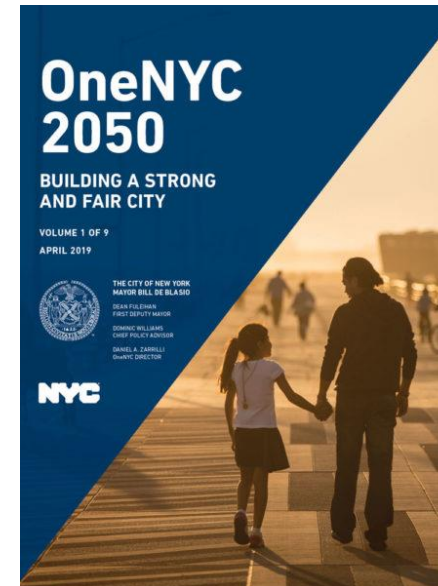
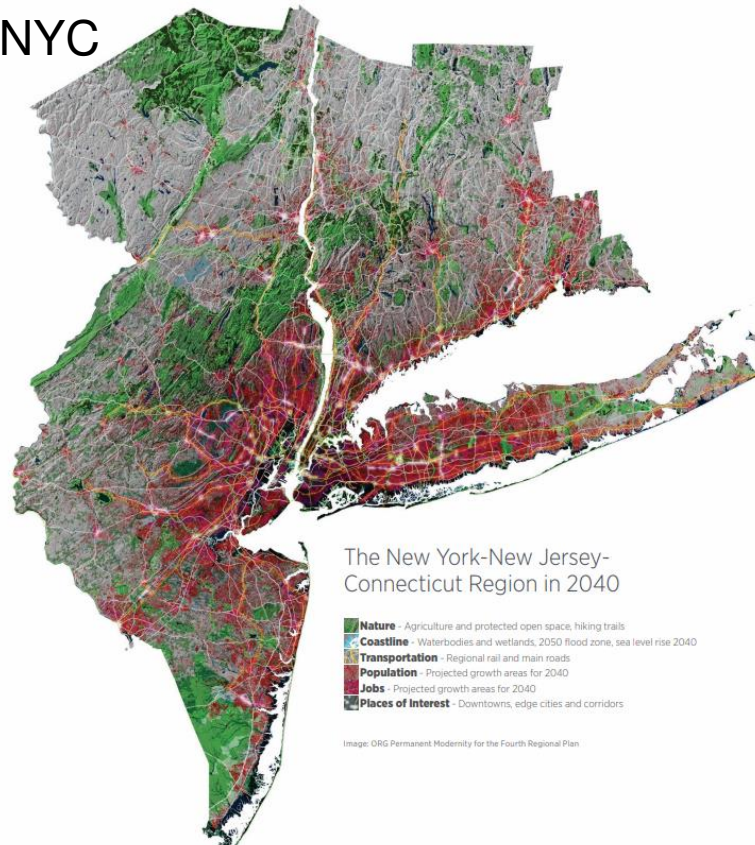
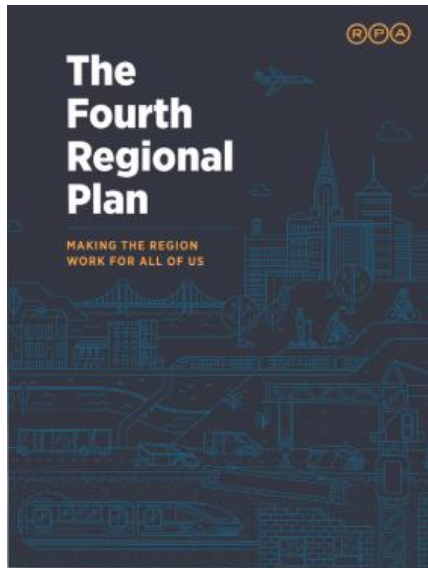


% Total CO₂ Emissions

34%

Promoting Integrated Land Planning and Infrastructure New York

NY RPA, RBD, One NYC



Source: <http://onenyc.cityofnewyork.us/reports-resources/>

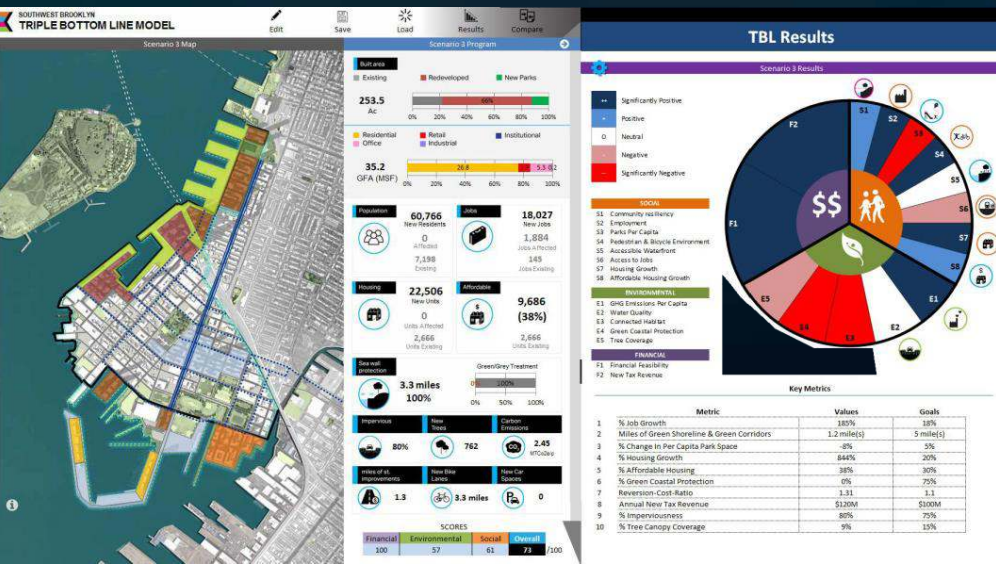
Source: <http://fourthplan.org/>

Reimagining Southwest Brooklyn

Red Hook today

- Not connected to subway
- Sea Level Rise challenges
- Equity imbalances
- NY: Housing affordability and access

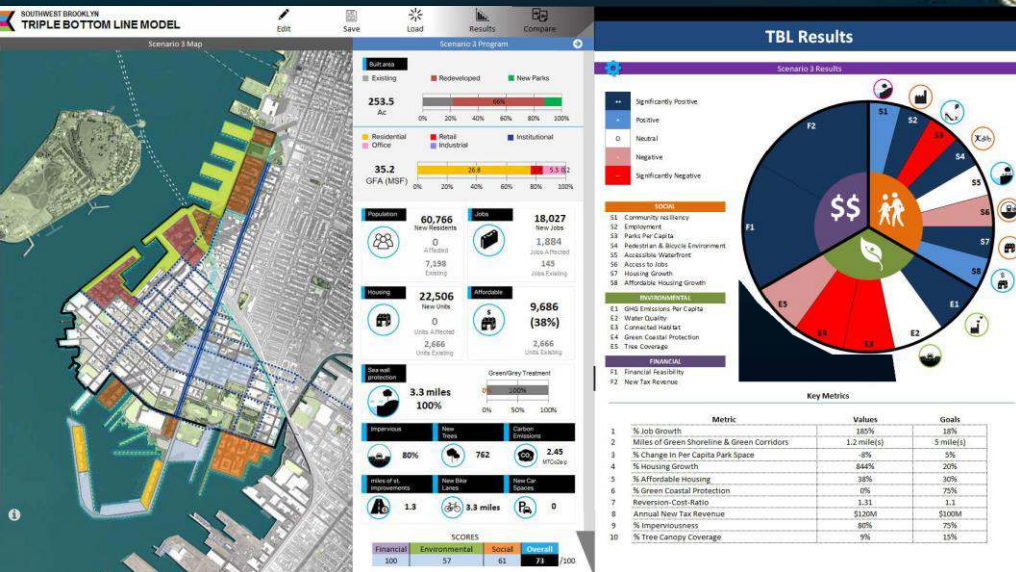
Reimagining Southwest Brooklyn



25Mft²

AECOM

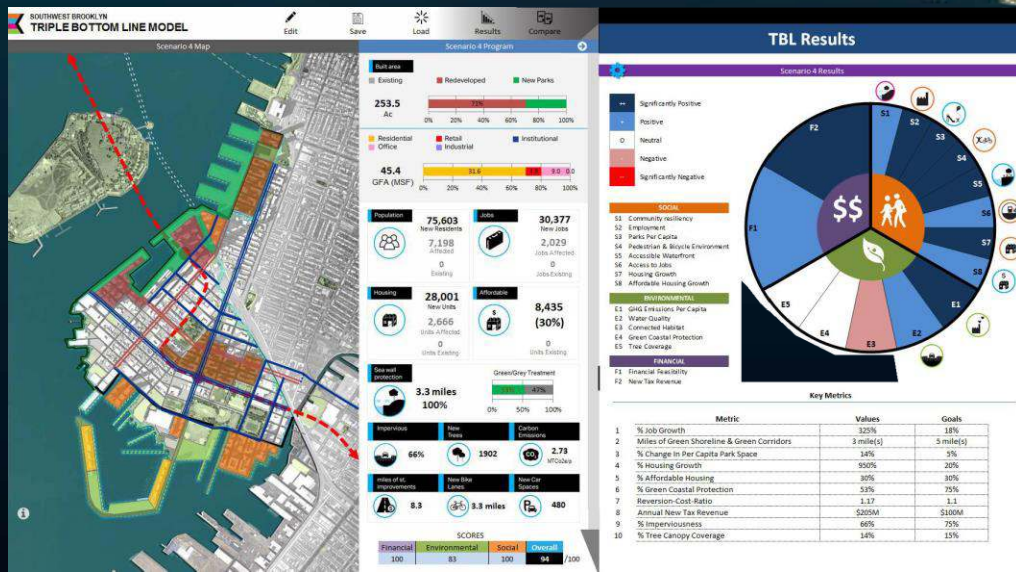
Reimagining Southwest Brooklyn



35Mft²

AECOM

Reimagining Southwest Brooklyn







45Mft²





Reimagining Southwest Brooklyn

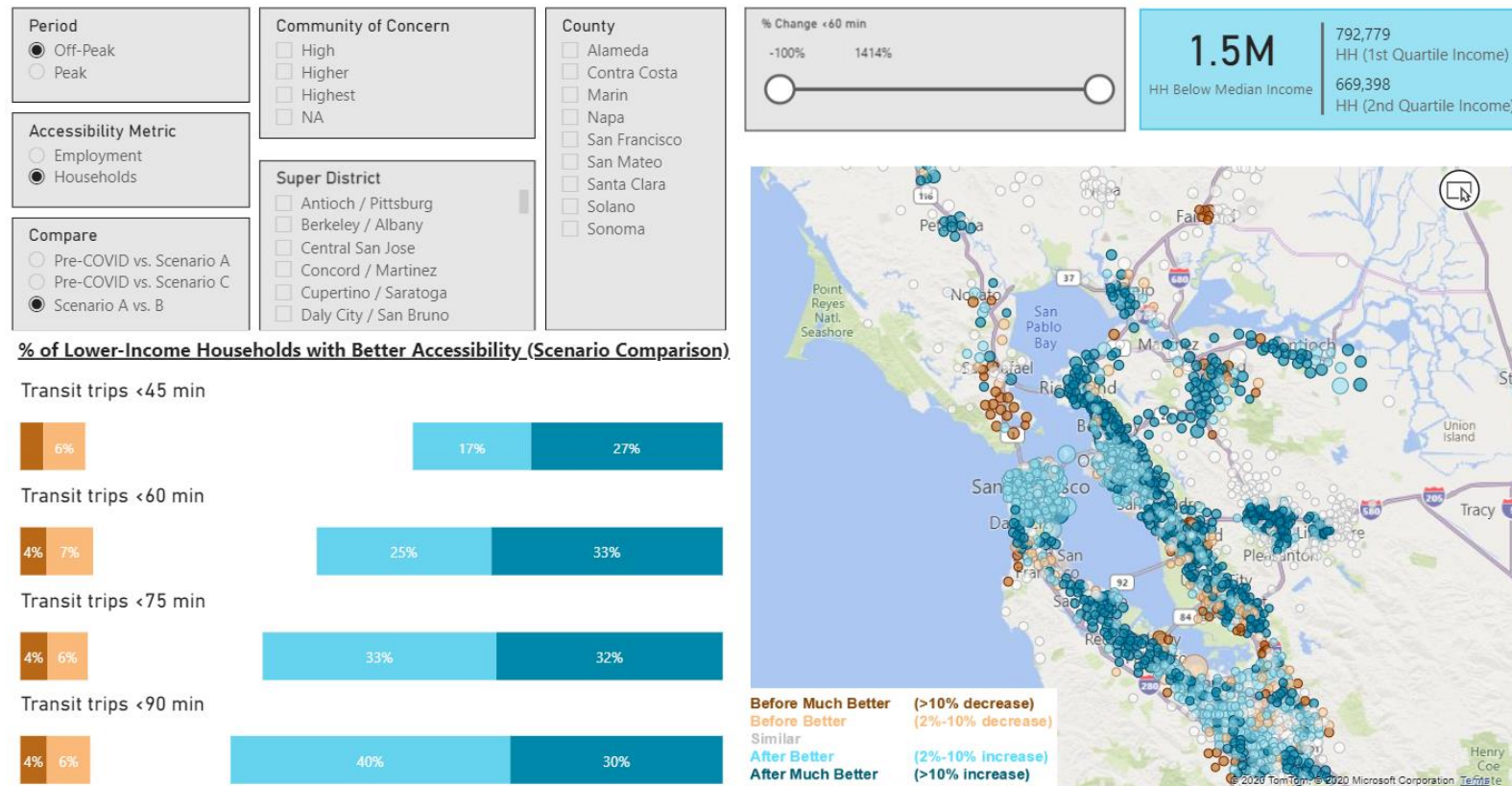
	Existing Condition	In-Fill Development	25M SQ FT	35M SQ FT	45M SQ FT
	LIMITED Transit Options Job SHORTAGE LITTLE Tax Revenue Housing SHORTAGE	LIMITED Transit Options Job SHORTAGE LITTLE Annual New Revenue 6623 Housing Units	LIMITED Transit Options 2500 New Jobs \$50M Annual New Revenue 29540 Housing Units	SUBWAY with 3 New Stations 8750 New Jobs \$90M Annual New Revenue 39540 Housing Units	SUBWAY with 3 New Stations 15700 New Jobs \$130M Annual New Revenue 49540 Housing Units
	3000 Affordable Housing Units -- FEW Streetscapes	4323 Affordable Housing Units -- 1.7 MILES Streetscapes	6250 NEW Affordable Housing Units -- 1.3 MILES Streetscapes	8750 NEW Affordable Housing Units -- 3.0 MILES Enhanced Streetscapes	11250 NEW Affordable Housing Units 3065 PRESERVED Affordable Housing Units 5.7 MILES Enhanced Streetscapes
	LIMITED Coastal Protection	2.4 MILES Coastal Protection	2.4 MILES Coastal Protection	4.5 MILES Coastal Protection	4.5 MILES Coastal Protection
	0.5 MILES Waterfront Access LIMITED Open Space	2.1 MILES Waterfront Access 74 ACRES Open Space	0.8 MILES Waterfront Access LIMITED Open Space	2.1 MILES Waterfront Access 50 ACRES New Open Space	2.1 MILES Waterfront Access 100 ACRES New Open Space

Promoting Integrated Land Planning and Infrastructure SF Bay Region

- Promoting regional approach to Just Recovery
- 1.5 million new households and 1.4 million new jobs
- Equity as investment priority
- Regional collaboration is key



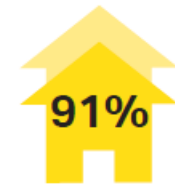
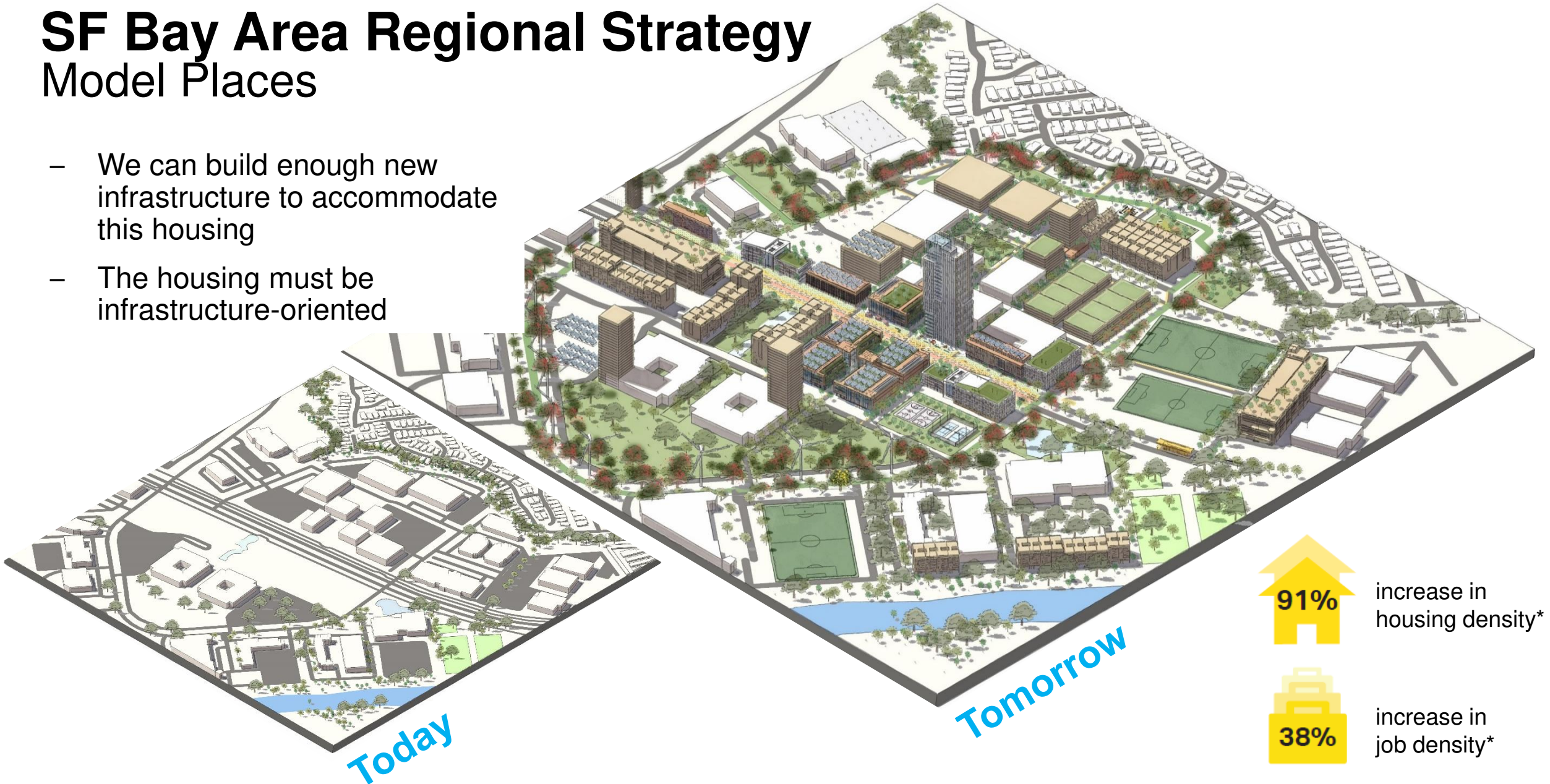
Accessibility Comparison by TAZ (Lower-Income Households)



SF Bay Area Regional Strategy

Model Places

- We can build enough new infrastructure to accommodate this housing
- The housing must be infrastructure-oriented



increase in
housing density*



increase in
job density*

Cities are at the forefront of translating **policy** >> **action**

1

**Making the
Business Case for
Resilience**

Miami

2

**Advancing
Electrification &
Preparing the
Future Workforce**

Chicago

3

**Accelerating
Clean Energy
Innovation**

Los Angeles

4

**Delivering on
Decarbonization
Promises**

Manchester, UK

5

**Promoting
Integrated Land
Planning and
Infrastructure**

New York

San Francisco

Stephen.engblom@aecom.com



@stephengblom